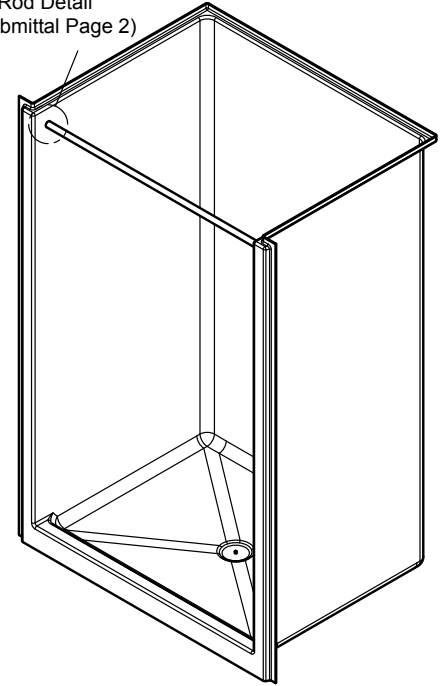


Project Name		Customer Name	
Quote Number		Date	
Customization			

## Standard Features

Type	One-piece curbed shower stall
Color	White
Exterior Dimensions	48"W x 36-3/8"D x 79-1/4"H
Materials	Gel coat and fiberglass composite
Approximate Weight	135 lbs

Curtain Rod Detail  
(See Submittal Page 2)



## Certifications and Accessibility Code Compliance



Uniform Plumbing  
Code



CSA B45.5-11 / IAPMO Z124-  
2017



HUD / FHA

# ANSI

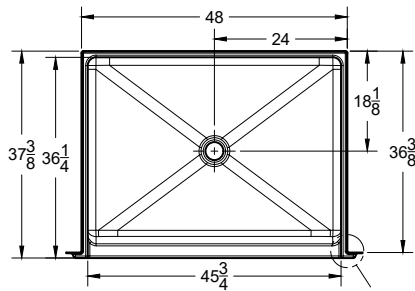
ICC A117.1 - 2017  
ANSI Type B

## Warranty

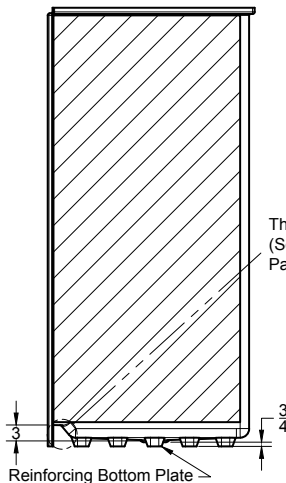
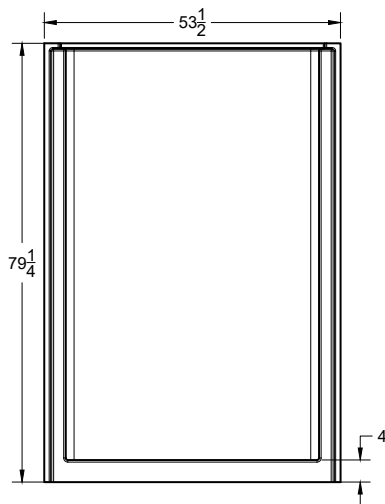
30 Year Limited

## Reinforcement

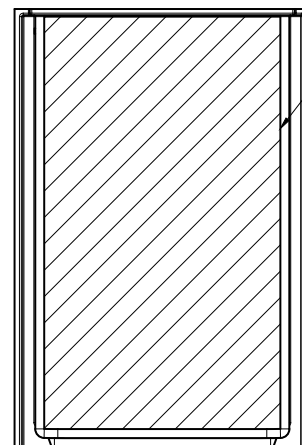
Fully reinforced with EverFab's unique composite core material according to FHA and ANSI A117.1 Type B requirements



Return Flange Detail  
(See Submittal Page 2)



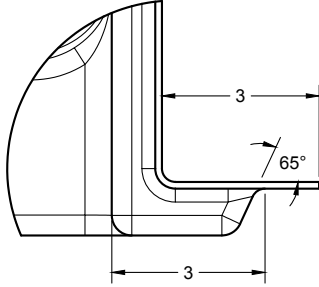
Threshold Detail  
(See Submittal  
Page 2)



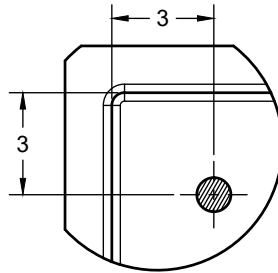
Fully reinforced with  
EverFab core material  
for factory or field  
installation of grab bars  
and seat

 Affordable Housing  
**SHOWERS.com**  
by ORCA HealthCare  
[www.affordablehousingshowers.com](http://www.affordablehousingshowers.com)  
Quotes and inquiries:  
1-888-286-8030  
info@affordablehousingshowers.com

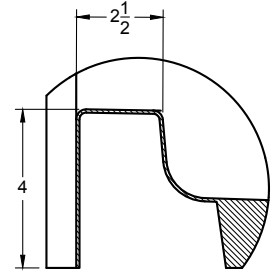
## Additional Details



Return Flange



Standard Curtain Rod Location



Threshold

## Architectural Specifications

### A. Shower Stall:

1. Model: No. S4836RFB
2. Description: One-piece shower stall with reinforcing bottom plate, slip-resistant floor, and inorganic composite reinforcement capable of meeting FHA and ANSI A117.1 Type B accessibility requirements
3. Exterior dimensions: 48 inches wide x 36-3/8 inches deep x 79-1/4 inches high
4. Rough-in: +1/8" -0" nominal dimensions
5. Optional Accessories: Furnish with [curtain rod], [shower curtain], [recessed soap dish], [composite corner shelf], [shower slide-bar kit], [shower drain], [18" grab bar], [24" grab bar], [folding seat]. If applicable, please indicate location of additional accessories on drawing
6. Accessory Style: [Standard Thru-Bolted], [Flanged], [Anti-Ligature], [Custom]
7. Accessory Finish: [Standard Satin Stainless], [Matte Black], [Polished Stainless] [White], [Custom]

## Optional/Standalone Accessories†

<input type="checkbox"/> CR4587501T	Thru-bolted Curtain Rod	<input type="checkbox"/> SB1800T	18" grab bar
<input type="checkbox"/> EF-4872-SC	Shower Curtain	<input type="checkbox"/> SB2400T	24" grab bar
<input type="checkbox"/> EF-0000-SD	Recessed Soap Dish		
<input type="checkbox"/> EF-0000-CCS	Composite Corner Shelf		
<input type="checkbox"/> EF-0000-SK	Shower Slide-Bar Kit		
<input type="checkbox"/> EF-0000-DA	Shower Drain		

†If applicable, please select accessory style and finish from options below. If non-standard accessory is selected, please also indicate desired location(s) on drawing.

## Accessory Style

- Thru-bolted (Standard)
- Flanged
- Anti-ligature

## Accessory Finish

- Satin Stainless (Standard)
- Matte Black
- Polished Stainless
- White
- Custom, please specify:



Affordable Housing  
**SHOWERS.com**  
by ORCA HealthCare

[www.affordablehousingshowers.com](http://www.affordablehousingshowers.com)

Quotes and inquiries:

1-888-286-8030

info@affordablehousingshowers.com